

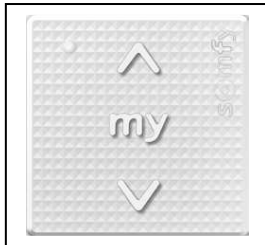
25 - 03 - 2010

SDEV-FICA 86R2

<b>Designation</b>	<b>Smooove Origin RTS</b>
<b>Reference</b>	<b>1810880 ; 1811045 (intl) ; 1810963 (industrial min qte 50)</b>
<b>Range</b>	<b>RTS</b>

## FUNCTIONS

- Command: Up, My, Down
- Setting with RTS ergonomic
- Adaptation with Standard (49075) DIN 50x50
- Composition: 1 Module, 1 frame & 1 Mounting plate



Pure

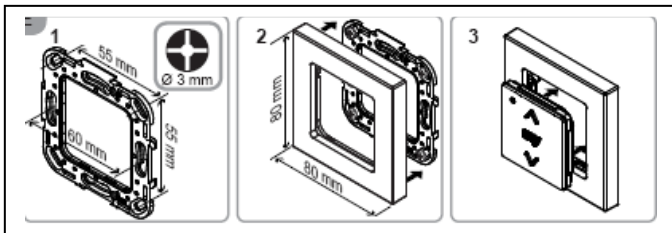


Support mural

## TECHNICAL SPECIFICATIONS

Box	Material	ABS & PC
	Color	Pure
	Size	Module 50 x 50 x 10 mm Frame 80 x 80 x 10 mm
	Protection factor against solid & splashproof	IP 30
Battery	Voltage	3V
	Type	CR 2430
	Number	x1
Battery lifetime (at ambient temperature in typical conditions)		60 months
Radio frequency		433.42MHz $\pm$ 100kHz
EIRP (Equivalent Isotropically Radiated Power)		-1 dBm or 0.8mW
Modulation Type		ASK Type A1
Protocol		RTS U56
Antenna		Integrated
Temperature range	Storing	-30°C / +70°C
	Working	0°C / +60°C
Drop test		Installation: at 0°C 1/face (height : 1,2m) Using: at 20°C 1/face (height : 1,2m)
Wear resistivity		50
Cleaning products resistivity		250 cycles
Weight		24g
Standard (CE)		
<i>Safety of the user : EN EN60950-1 : 2006</i>		
<i>Health of the user : EN50371 : 2002</i>		
<i>Electromagnetic compatibility : EN61000-6-1: 2007_EN61000-6-3 : 2007_EN301 489-3 V1.4.1 : 2002_EN301 489-1 V1.8.1 : 2008</i>		
<i>Radio Spectrum : EN300220-2 V2.1.2 : 2007_EN300220-1 V2.1.1 : 2006</i>		

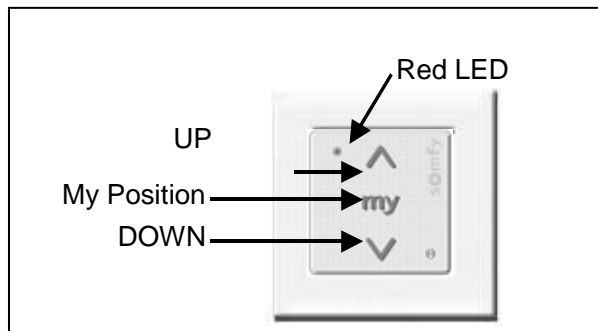
## DESCRIPTION



Red cover for RTS technology



prog



## COMPATIBILITIES

Actuators :

- All RTS actuators

BE – R&D  
F. GIGOUT

QUALITY  
G. BRUNEAU

MARKETING  
C. DENIAU