

25 - 03 - 2010

SDEV-FICA 87R2

Designation	Smooove 1 RTS
Reference	1810881 (pure shine); 1810964 (pure industrial min qty 50); 1810882 (black shine); 1810883 (silver shine); 1810884 (red light)
Range	RTS

FUNCTIONS

- Sensitive Command : Up, My, Down
- Setting with RTS ergonomic
- Composition: 1 module, 1 Mounting plate

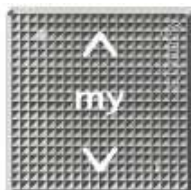
- Icon Battery life time
- Switch ON/OFF



Smooove 1 Pure Shine



Smooove 1 Black Shine



Smooove 1 Silver Shine



Smooove 1 Red Light

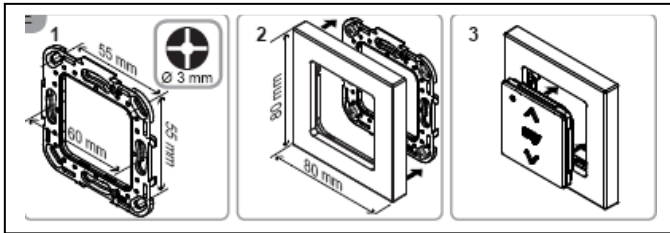


Support mural

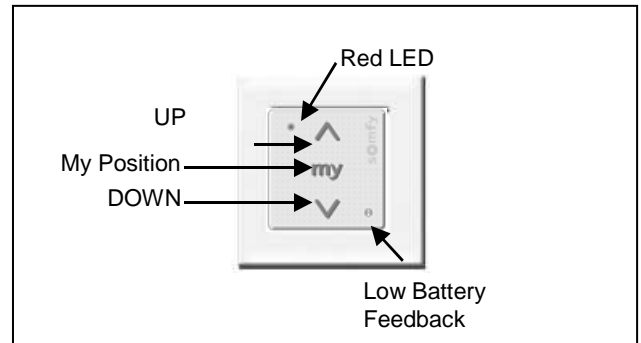
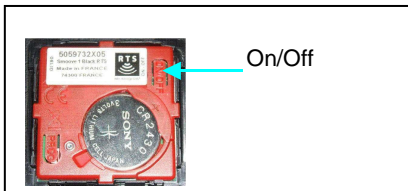
TECHNICAL SPECIFICATIONS

Box	Material Color	ABS & PC Pure Shine, Black Shine, Silver Shine, Red Lisa
	Size	Module 50 x 50 x 10 mm
	Protection factor against solid & splashproof	IP 30
Battery	Voltage Type Number	3V CR 2430 x1
Battery lifetime (at ambient temperature in typical conditions)		42 months
Radio frequency EIRP (Equivalent Isotropically Radiated Power) Modulation Type		433.42MHz \pm 100kHz -4 dBm or 0.4mW ASK Type A1
Protocol Antenna		RTS U56 Integrated
Temperature range	Storing Working	-30°C / +70°C 0°C / +60°C
Drop test		Installation: at 0°C 1/face (height : 1,2m) Using: at 20°C 1/face (height : 1,2m)
Wear resistivity Cleaning products resistivity		50 250 cycles
Weight Standard (CE)		24g
Safety of the user : EN EN60950-1 : 2006		
Health of the user : EN50371 : 2002		
Electromagnetic compatibility : EN61000-6-1: 2007_EN61000-6-3 : 2007_EN301 489-3 V1.4.1 : 2002_EN301 489-1 V1.8.1 : 2008		
Radio Spectrum : EN300220-2 V2.1.2 : 2007_EN300220-1 V2.1.1 : 2006		

DESCRIPTION



Red cover for RTS technology



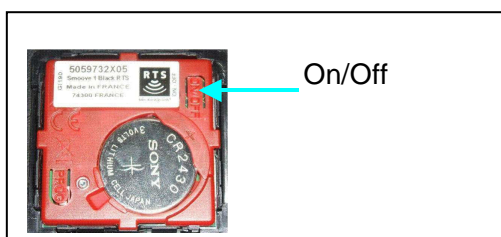
COMPATIBILITIES

Actuators :

- All RTS actuators

INSTALLATION

Switch ON/OFF

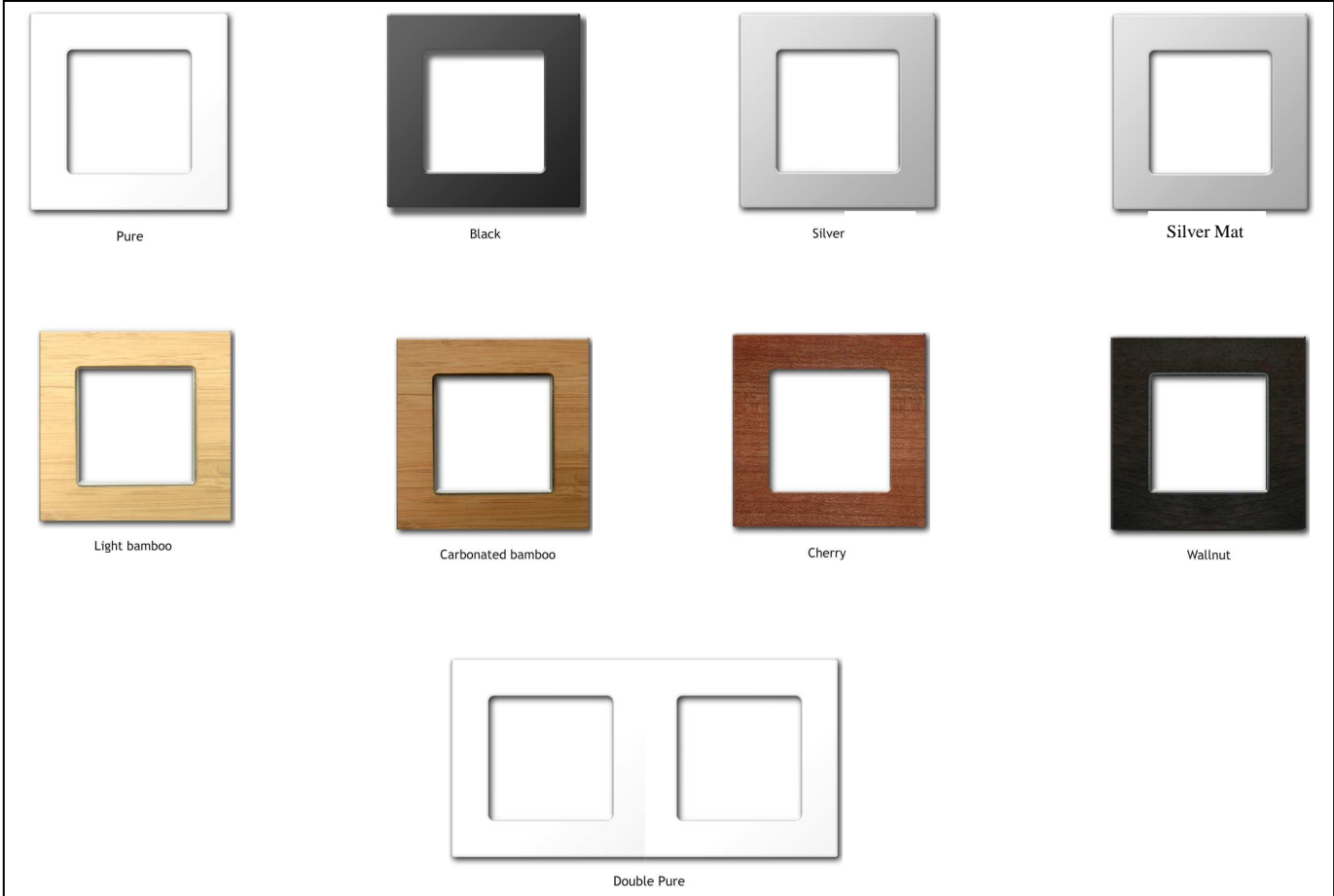


- Press On/Off button for wake up the sensitive pad.

Remark

The prog button is available when the module is OFF

Frame available



BE – R&D
F. GIGOUT

QUALITY
G. BRUNEAU

MARKETING
C. DENIAU