

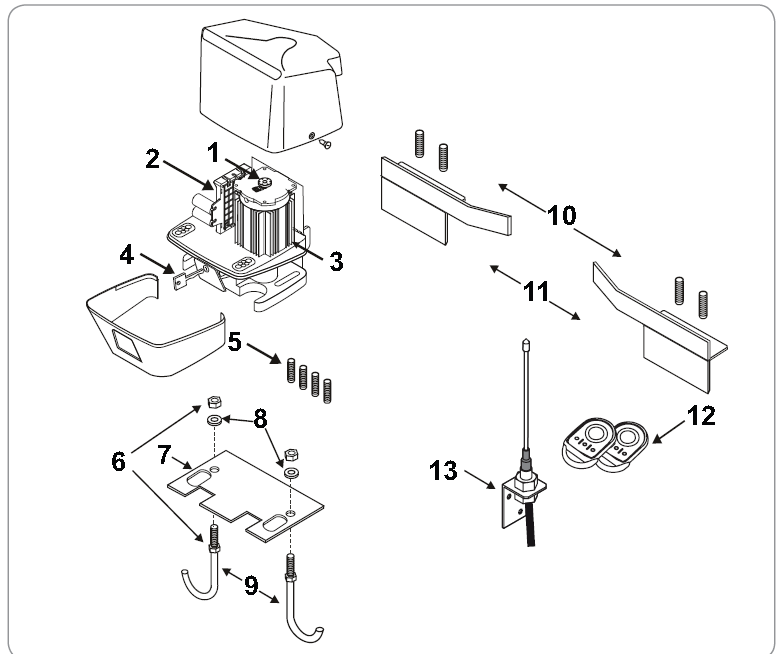
# ELIXO 1300 230V RTS

Product reference	1216264	Cancels & replaces	
EAN Code	/	Guarantee	3 years
Pack dimensions (LxHxD)	25 x 35,5 x 27 (cm)	Marketing date	January 2010
Weight	12,50 (kg)		
Pack type	White box		
Minimum order	1		
Delivery mode	According to delivery (pallet or box)		

**MADE IN France**  
[www.somfy.com](http://www.somfy.com)

## Pack content :

- |    |   |
|----|---|
| 1  | Encoder system                          |
| 2  | Electronic control unit                 |
| 3  | Motor                                   |
| 4  | Disengagement keys                      |
| 5  | M8 bolt to set the level of the motor   |
| 6  | Nuts                                    |
| 7  | Mounting plate                          |
| 8  | Washers                                 |
| 9  | Locking studs                           |
| 10 | M6 bolts for fitting end limit brackets |
| 11 | End limit brackets                      |
| 12 | Keygo remote controls                   |
| 13 | Offset aerial                           |

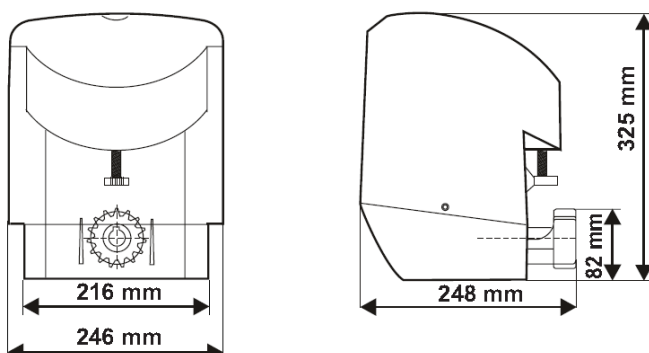


## Area of application:

Sliding gates up to 1300 kg and carrying out 100 cycles per day.

Max consecutive cycle: - 12 cycles for 7 meters long way gate  
 - 6 cycles for 10 meters long way gate

## Dimensions:



## Accessories:

1 meter steel rack	9011069
Keygo RTS	1841064
Keypad metal RTS	1841116
230V amber light	9015882
Photo electric cells	9014994
Photo electric metal protection cover	9015132
Rubber strip low profile	9014597
Rubber strip big profile	9014598

# TECHNICAL SPECIFICATIONS

Maximum weight of the gate	1300 kg
Area of application	Residential and commercial
Power supply	230 Vac $\pm$ 10% 50-60 Hz
Power consumption	260 W
Current consumption	2,9 A max.
Traction and pushing force	1 100 N - adjustable by adjusting the power supply voltage
Gate speed	10 m/min
Impact force	Electronic detection - adjustable impact force
Gate travel management	Integrated encoder
Slowing zone	Adjustable gate travel Adjustable impact force
Reduction gearing	steel pinion reduction ratio : 1/28
Number of cycles	Max per day : 100 Max. consecutive : - 12 cycles for a 7 meters long way gate - 6 cycles for a 10 meters long way gate Thermal protection : 150°C
Motor working time - maximum safety time	300 s
Operating modes	Sequential (4 steps) Semi automatic (3 steps) Automatic closing options : - Automatic closing time from 0 to 120 seconds - With movement in front of the photoelectric cells
Motor power supply	1 single-phase motor, 230 Vac, 400W
Starting time	fixed 2 seconds
Accessories power supply	24 Vdc, 500 mA
Wired control input	2 programmable NO inputs : - Complete opening or close only - Pedestrian opening or open only Stop - NC
Photoelectric cell input	Dry contact : NC
Safety edge safety input	Dry contact : NC
Area lighting	230 V AC, 100 W max. Area lighting time : fixed 90 seconds
Orange light input	230 V AC, 50 W max. with integrated flashing control
Gate opening indicator output	dry contact : NO 230V, 3A max.
Aerial input	Impedance 50 Ohms
Operating temperature	- 20 °C to + 60 °C
Index protection rating	IP44
weight	12,5 kg
Dimensions	246 x 325 x 248 mm
Built in radio receiver	RTS
Number of storable remote controls	36
RTS remote control frequency	433,42 Mhz

This product, installed in accordance with this guide, complies with EN 12453 and EN 13241-1 standards. It is the installers responsibility to ensure that the automatic installation and its operation are compliant with the standards in force.

Hereby, somfy, declares that this product is in compliance with the essential requirements and other relevant provisions of directive 1999/5/EC.

A declaration of conformity is available on the web site at [www.somfy.com/CE](http://www.somfy.com/CE) (Elixo 1300V), usable in UE, CH and NO.