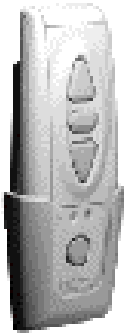


INSTALLATION



inteo **TELIS SOLIRIS RTS** *guide*

The **TELIS SOLIRIS RTS** is a SINGLE CHANNEL hand-held transmitter compatible with the **SOLIRIS receiver RTS**. Commands are transmitted by radio (frequency 433.42 MHz).

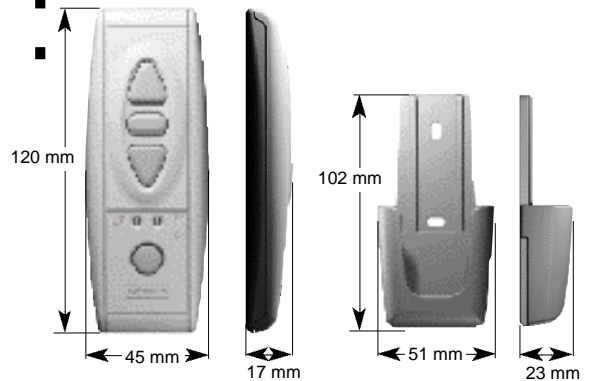
1

Characteristics :

- Power: 3V lithium battery, CR 2430 type
- Protection index: IP 30
- Operating temperature: +5°C to +40°C
- Class III product
- Normally polluted environment

CE01650

Hereby, SOMFY, declares that this equipment is in compliance with the essential requirements and other relevant provisions of Directive 1999/5/EC.
A Declaration of Conformity is available at the web address www.somfy.com Heading CE



2

Programming :

A INITIAL INSTALLATION

Memorise a TELIS SOLIRIS RTS in the memory of a SOLIRIS receiver RTS

- Press the PROG button of the **SOLIRIS receiver RTS** until its LED lights. This indicates that the receiver is ready for **one minute** to memorise the address of the transmitter. After this time limit, the LED goes out.
- Press the programming button on the backside of the **TELIS SOLIRIS RTS** with a ball-point pen until the LED of the **SOLIRIS receiver RTS** blinks.
 - ⇨ The address of the transmitter is memorized by the RTS receiver which automatically quits its programming mode.



B EXISTING INSTALLATION

Add another control (TELIS 1/4 RTS; CENTRALIS RTS) in the memory of the SOLIRIS receiver RTS

TWO POSSIBILITIES

- 1 Repeat the same procedure as described in **chapter 2A**.
- 2 • Press more than two seconds on the programming button of a **TELIS SOLIRIS RTS** already memorized in the **SOLIRIS receiver RTS** in order to "wake up" the receiver.
 - ⇨ the both LEDs of the **TELIS SOLIRIS RTS** light on, indicating that the **SOLIRIS receiver RTS** is in its programming mode for one minute.
 - Press **briefly** the programming button of the new control you wish to memorise.
 - ⇨ The address of the control is memorised in the **SOLIRIS receiver RTS** which automatically quit its programming mode.




SOMFY

C DELETE A TRANSMITTER FROM THE MEMORY OF A RECEIVER

To delete a transmitter from a RTS receiver, carry out the same procedure as described in **chapter 2A** : Set the RTS receiver in its programming mode, then press the prog button of the transmitter (the transmitter will be erased from the memory of the receiver).



3 Using :

A UP / DOWN / STOP COMMANDS

By pressing briefly the  or  push buttons, the awning is activated in the corresponding direction.
By pressing briefly the  push button, the awning stops.

B WIND/SUN CONFIGURATION

With the TELIS SOLIRIS RTS, it is possible to configure the functioning of the SOLIRIS receiver RTS.

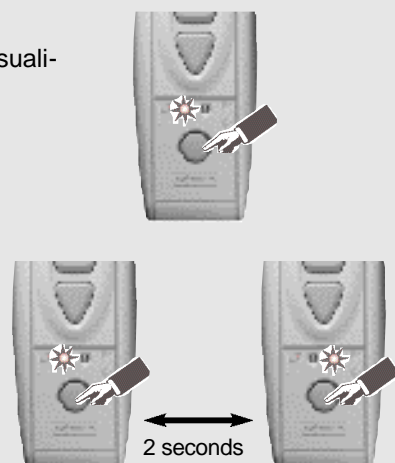
-  (wind) : the receiver reacts in accordance with the wind information and with the manual UP/DOWN/STOP commands.
-  (wind and sun) : the receiver reacts in accordance with the wind, the sun and with the manual UP/DOWN/STOP commands.


VISUALISE THE CONFIGURATION MODE :

- Press **briefly** on the select button of the **TELIS SOLIRIS RTS** to visualise the present configuration mode.
- The corresponding LED lights on.

CHANGE THE CONFIGURATION :

- Press continuously the select button of the **TELIS SOLIRIS RTS** (approx. 2sec) in order to change the configuration mode of the **SOLIRIS receiver RTS** (wind only / wind and sun).
- The LED corresponding to the present mode lights on during approximately 2 sec, then it toggles to the other LED indicating that the **TELIS SOLIRIS RTS** has send a radio control to change the configuration of the **SOLIRIS receiver RTS**.



 In order not to have a TELIS SOLIRIS RTS visualising a wrong information, do not memorise two TELIS SOLIRIS RTS in the same SOLIRIS receiver RTS.

Battery life

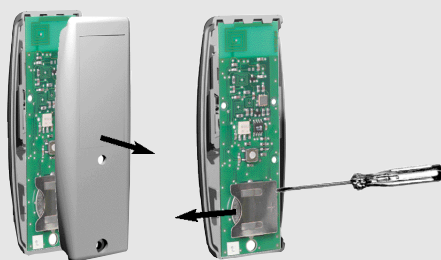
The transmitters are fitted with a 3V battery (type 2430) which provides about 3 years operation assuming 4 operations per day. When the battery becomes discharged, the control LED no longer lights up when a command is sent, and the command is not carried out.

How to change the battery

- Remove the back cover of the transmitter with a screwdriver.
- Slide the battery out of its house by pushing it with a screwdriver.
- Insert the new battery.



Do not throw the empty battery anywhere (put it in a special expected place).



SOMFY